

PREMIER

CONCRETE PRODUCTS

WE MANUFACTURE
PRECAST CONCRETE PIPE
ARCH PIPE | BOX CULVERT



CONCRETE SOLUTIONS | CONCRETE RESULTS



GOAL

Our goal is to build upon the reputation of excellent customer service, refine the manufacturing process to achieve superior quality, and to supply the market with a wide range of concrete products while providing a work/ life balance for our employees' success, growth, and safety.

VISION

We are committed to a vision of being an esteemed industry leader adding value, sustainability and development in the concrete industry.

MISSION

To be a business upholding family values, dedicating undying effort to manufacturing high quality products with a focus on providing superior service to our customers.

Applicable Specifications

- ASTM C76 / AASHTO M170 - Reinforced Concrete Culvert, Storm Drain, and Sewer Pipe

- ASTM C443 / AASHTO M198 - Joints for Circular Concrete Sewer and Culvert Pipe, Using Rubber Gaskets

- ASTM C361 - Reinforced Concrete Low Head Pressure Pipe

- ASTM C655 - Reinforced Concrete D-Load Culvert, Storm Drain and Sewer Pipe

- ASTM C990 - Standard Specification for Joints for Concrete Pipe, Manholes, and Precast Box Sections Using Preformed Flexible Joint Sealants Structures

- ASTM C1619 - Standard Specification for Elastomeric Seals for Joining Concrete

- State / Local Department of Transportation requirements.

WHY REINFORCED CONCRETE PIPE?

Reinforced concrete pipe (RCP) is the preferred choice for storm water systems across the country.

With a proven history of reliability, it's clear why municipalities and contractors rely on concrete pipe to build resilient infrastructure.

RCP is designed and manufactured to withstand a complete range of underground environments and runoff profiles. Concrete pipe serves as both a conduit and a structure, a characteristic that sets it apart from flexible materials.

RCP offers many benefits for flood-resilient infrastructure. Manufactured in larger diameters than other materials, RCP offers greater flow capacity to reduce flooding and prevent erosion. In the event of a flood, the weight of concrete pipe helps it resist floatation, unlike lighter pipe materials.

Unlike other products used for pipeline infrastructure, concrete pipes are inherently fire-resistant, which protects evacuation routes from collapse, flooding, and erosion. Safety-conscious engineers specify concrete pipe to reduce the risk of vital pipeline infrastructure melting and collapsing, compromising evacuation routes, and releasing harmful chemicals into the environment in the event of a wildfire.

RCP maintains structural integrity over a service life of 100 years plus, requiring minimal repairs. Its long service life limits the need for infrastructure replacement, and it integrates well with system expansions or alterations, even years after installation.

Premier Concrete Products' concrete pipe is made with local and domestic materials. Aggregates are sourced from local, sustainably managed quarries.

Changes in mix design, type of aggregates and cementitious materials, and manufacturing and curing processes can be specified to meet any load requirement. Our experienced engineering team will partner with you to be sure your product meets project needs.

Compressive strengths range between 4,000 to 8,000 PSI. Steel reinforcement adds to inherent strength professionals rely on in every phase of construction, utilizing the highest quality products.

Our team delivers satisfactory results with extensive quality assurance testing before, during, and after casting.

Sustainable

Concrete pipe is the most durable and sustainable material for infrastructure and major construction.

- Maintains structural integrity and reduces the cost of repairs and replacement.
- Integrates well with future expansions or alterations.

Dependable

Technological advances in research and development of concrete mixes, pipe design and manufacturing processes allow for product to withstand a complete range of underground environments and effluent profiles.

There is a better understanding about concrete pipe products by professionals involved in planning, design, construction, and installation.

Durable

Concrete pipe is designed to perform as expected for the life of the project.

Its functional life is 100 years plus.

Concrete will not burn, rust, tear, buckle, deflect, and is immune to the attack of most elements, whether buried or exposed.

Strength

Precast concrete pipe is the strongest pipe available; it can be designed and tested to meet any load requirement.

Compressive strengths for concrete pipe typically range from 4000 to 8000 psi depending on aggregates, cementitious materials used, the manufacturing and curing process, and mix design.

Concrete pipe strength is standardized by ASTM C76.

Concrete pipe's wire reinforcement adds significantly to its inherent strength.

Value

Concrete pipe maintains its value because of its rigidity and lack of maintenance or replacement once installed.

Design, installation, and inspection costs for concrete pipe are lower than comparable costs for alternative products.

Recommended for installation:

1. In conditions of low, moderate, or severe cover and live load conditions.
2. Where structural failure might endanger life or property.
3. Where internal hydrostatic pressures may be expected.

Sizes

Reinforced concrete pipe is available in diameters of 12 - 144 inches.

Applications

- Culverts
- Outfalls
- Utility tunnels
- Storm drains
- Low pressure sewer force mains
- Treatment plant piping
- Low pressure water supply systems
- Impound overflow conduits
- Irrigation distribution systems
- Groundwater recharge systems
- Cattle pass tunneling

Joints

Concrete joint with rubber gasket.

Tongue and groove for packing with mastic joint compound, preformed mastic or butyl gaskets.

Other specialty joints may be available.

Linings / Coatings

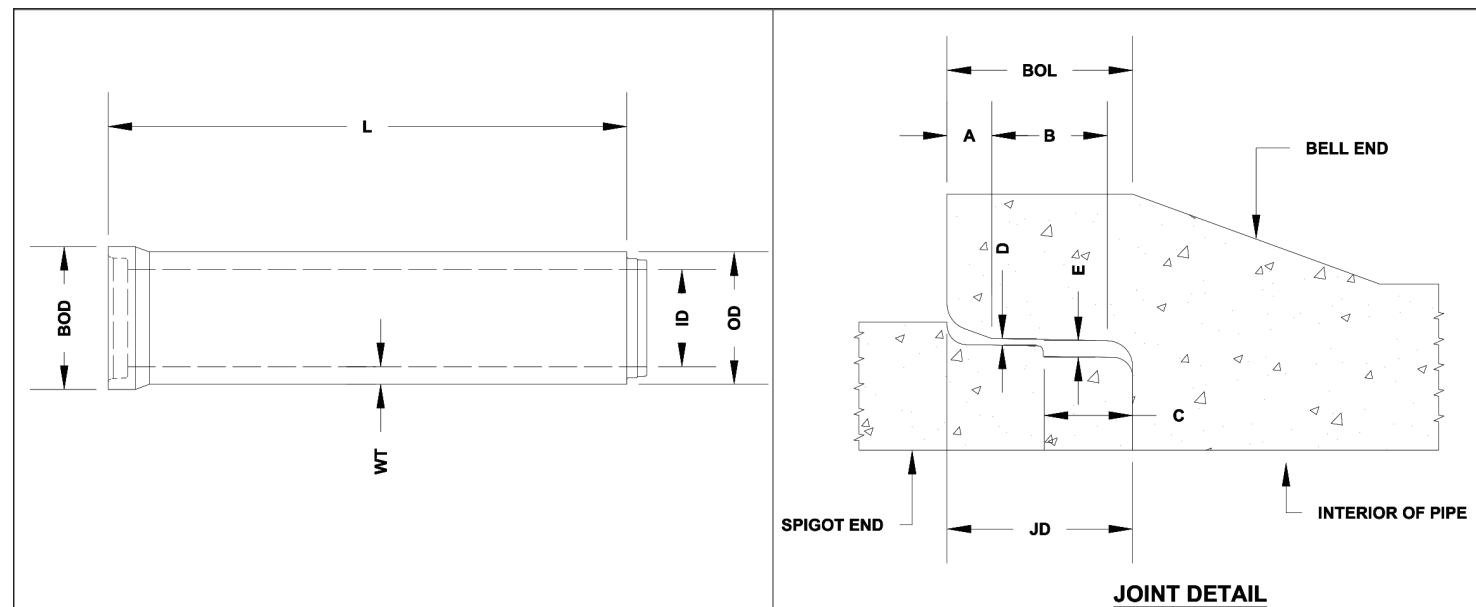
A variety of linings and coatings is available where project conditions dictate use.



SMALL REINFORCED CONCRETE PIPE | RCP

ID INCH	OD INCH	BELL OUTSIDE DIA (BOD) INCH	WALL THICKNESS (WT) INCH	LENGTH (L) INCH	BELL OUTSIDE LENGTH (BOL) INCH	JOINT DEPTH (JD) INCH	WEIGHT LBS
12	16	19.13	2	96	6.5	3.5	795
15	19.5	23.13	2.25	96	6.5	3.5	1,107
18	23	26.63	2.5	96	6.5	3.5	1,448
24	30	32.63	3	96	7	3.5	2,216
30	37	39.5	3.5	96	7	3.5	3,180
36	44	45.63	4	96	7	3.5	4,267
42	51	52	4.5	96	7	4	5,523

*All standard pipe is manufactured to ASTM C76 WALL B CLASS III. Class IV and V available upon request.



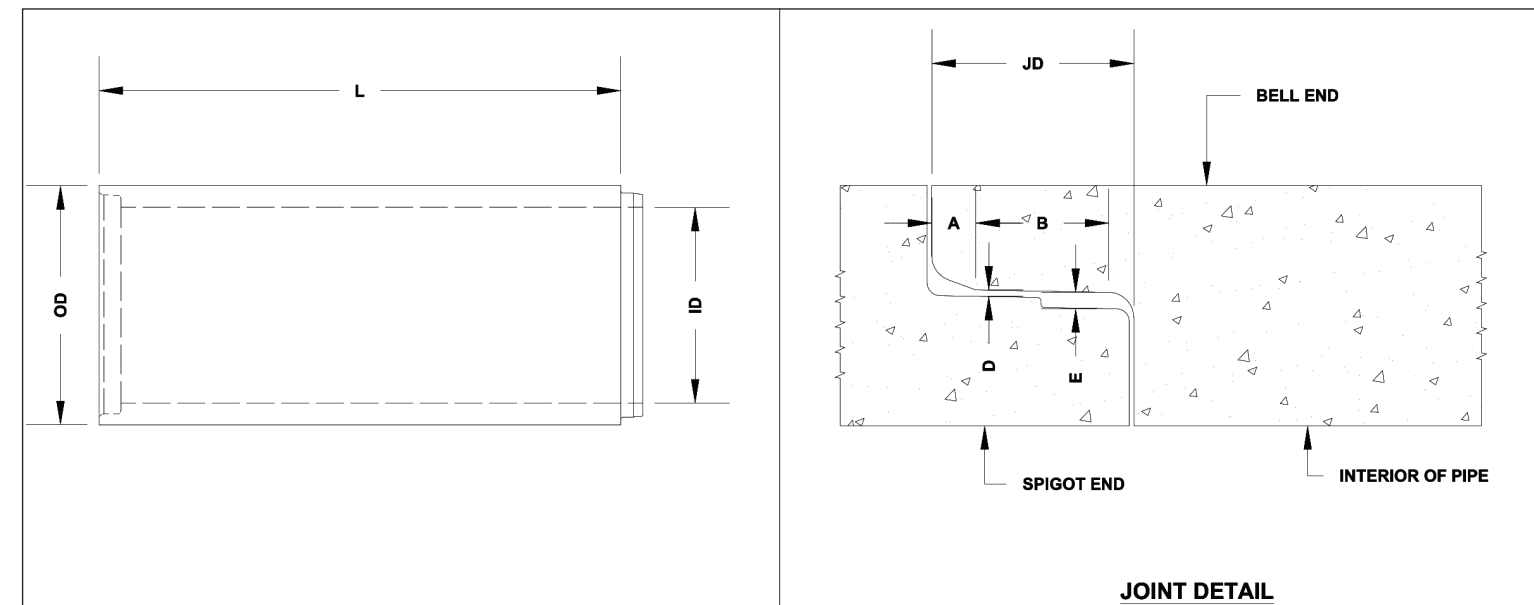
NOTES:

1. All dimensions subject to allowable specification tolerances and parameters.
2. All products meet or exceed applicable AASHTO, ASTM, and standard local requirements.
3. Steel welded wire mesh conforms to ASTM A1064, reinforcing meets/or exceeds ASTM-C76.
4. Pipe manufactured per ASTM C76 Class III, IV, and V, ASTM C655, C1837, and AASHTO M170
5. Joints and gaskets shall conform to ASTM C443 and C990.

LARGE REINFORCED CONCRETE PIPE | RCP

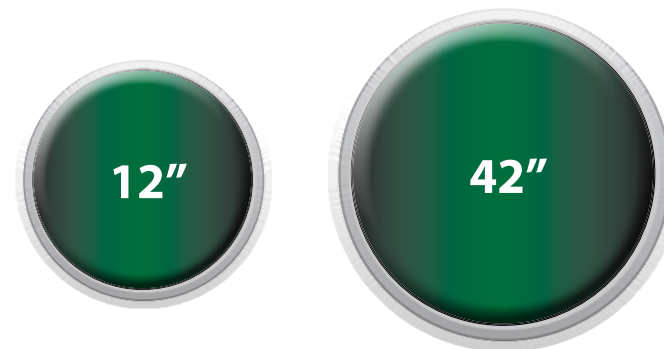
ID INCH	OD INCH	WALL THICKNESS (WT) INCH	LENGTH (L) INCH	JOINT DEPTH (JD) INCH	WEIGHT LBS
48	58	5	96	4.25	6,930
54	65	5.5	96	4.25	8,560
60	72	6	96	4.75	10,360
72	86	7	96	5	14,470
84	100	8	96	5	19,257
96	114	9	96	5	24,733
108	128	10	96	5	30,890
120	140	10	96	5.5	34,024
144	168	12	96	5.5	49,013

*All standard pipe is manufactured to ASTM C76 WALL B CLASS III. Class IV and V available upon request.

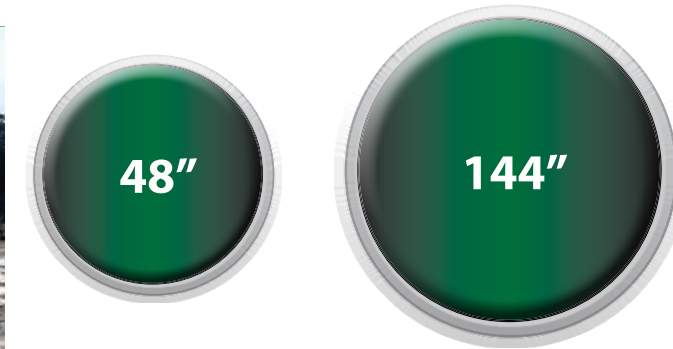


NOTES:

1. All dimensions subject to allowable specification tolerances and parameters.
2. All products meet or exceed applicable AASHTO, ASTM, and standard local requirements.
3. Steel welded wire mesh conforms to ASTM A1064, reinforcing meets/or exceeds ASTM-C76.
4. Pipe manufactured per ASTM C76 Class III, IV, and V, ASTM C655, C1837, and AASHTO M170
5. Joints and gaskets shall conform to ASTM C443 and C990.



ASTM C76-22A



ASTM C76-22A

REINFORCED CONCRETE ARCH PIPE | RCAP



REINFORCED CONCRETE ARCH PIPE (RCAP)

Reinforced concrete arch pipe is a versatile solution for situations where overhead space limitations or depth constraints require an alternative to traditional round concrete pipes. Its durability and strength make it a reliable choice for various infrastructure projects.

It is produced with tongue and groove joints for sealing, using various materials like mastic joint compound, preformed flexible bitumen, butyl rubber gaskets, mortar, or external joint wraps.

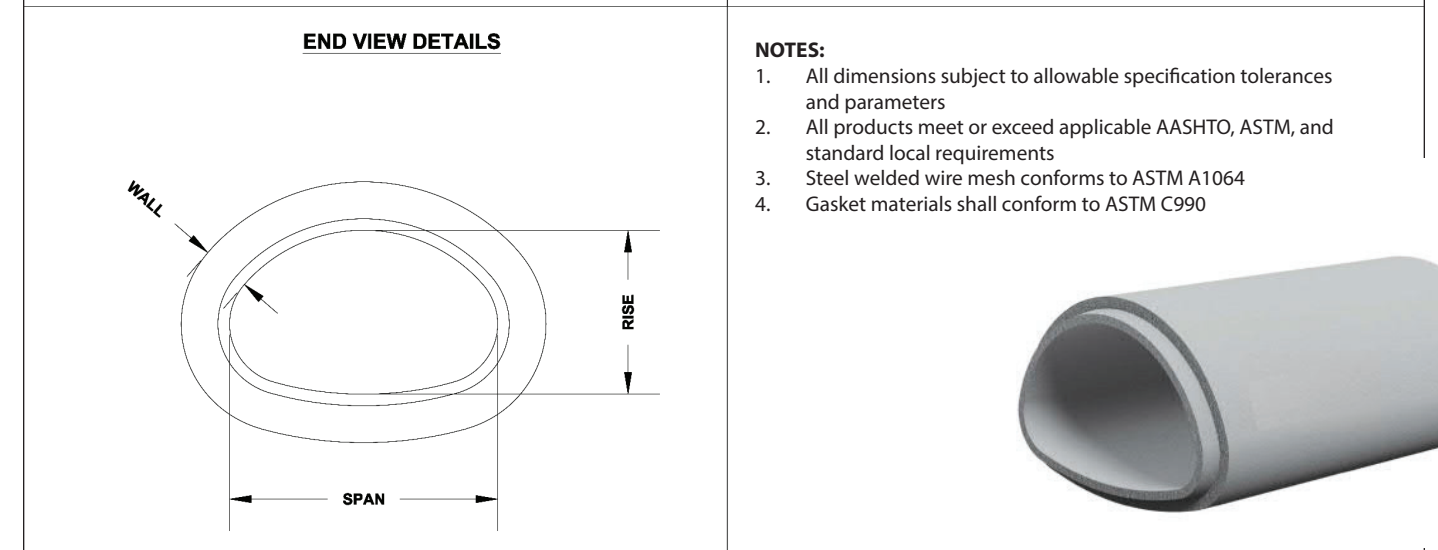
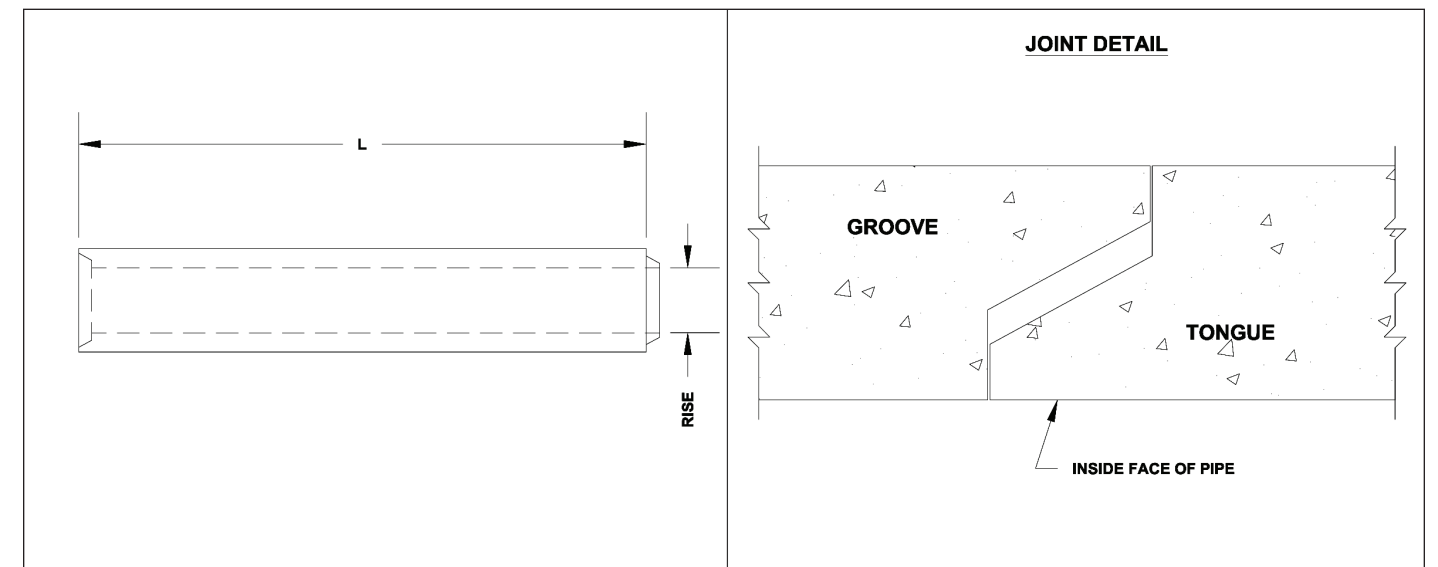
Advantages

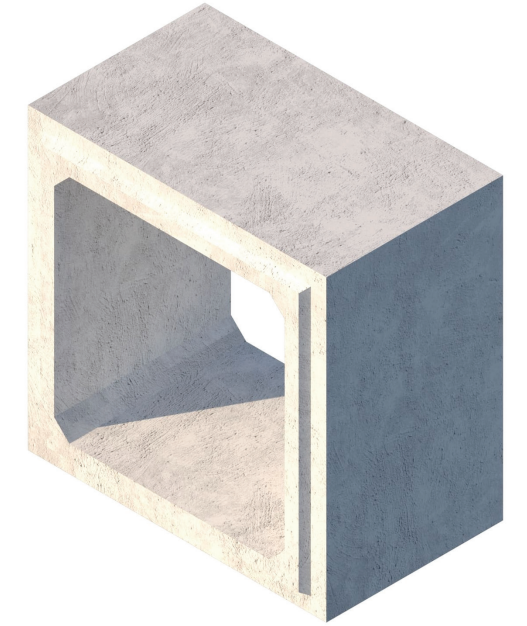
- Economical vs. cast-in-place.
- Natural stream bottoms are desired.
- Environmentally sensitive lands must be spanned.
- The span is larger than can be accommodated with a standard box culvert.

Dimensions: Inches

EQUIV. DIAMETER	WALL	RISE	SPAN	WEIGHT (LBS)
15	2.25	11.00	18.00	1,540.53
18	2.50	13.50	22.00	1,910.47
24	3.00	18.00	28.50	2,706.11
30	3.50	22.50	36.25	3,814.16
36	4.00	26.63	43.38	5,075.12
42	4.50	31.31	51.13	6,520.64
48	5.00	36.00	58.50	8,197.88
54	5.50	40.00	65.00	9,790.18
60	6.00	45.00	73.00	11,839.56
72	7.00	54.00	88.00	13,644.00

All arch concrete reinforced pipe is manufactured per ASTM C506-22A. Class A-II, A-III, and A-IV. Class IV and V available upon request.





PRECAST BOX CULVERTS

Precast box sections are recommended for installations where circular or elliptical concrete pipe cannot provide adequate flow capacity, and as a superior substitute for cast-in-place box culverts, long span metal arches, short bridges, and multi-barrel circular culverts or drains.

Sizes

Precast box sections are normally available in spans of 3 feet through 14 feet, with a variety of rises.

Please contact our Sales / Engineering team for additional sizes and options.

Applications

- Highway culverts
- Railroad culverts
- Highway bridges
- Short span highway bridges
- Storm drains
- Livestock, pedestrian or golf cart undercrossing
- Utility tunnels
- Underground stormwater retention structures
- Groundwater recharge systems
- Replacement of existing open channels or ditches
- Jacked or tunneled installations

Joints

Precast box sections are produced with tongue and groove joints and a glued-on neoprene gasket.

Joints may also be packed with mastic joint compound, preformed mastic or butyl gaskets, mortar, or other approved sealant.

Linings / Coatings

A variety of linings and coatings is available where project conditions dictate their use.



PROVEN SUSTAINABILITY
Concrete Pipe Maintains Structural Integrity Over a Service Life of 100 Years Plus.

Evolution of Concrete Use

1793



JOHN SMEATON
Discovered a more efficient way to produce hydraulic lime for cement by using clay containing limestone.

1824



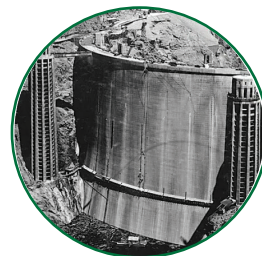
JOSEPH ASPDIN
Portland Cement Inventor

1902



FIRST APARTMENT BUILT
First apartment building using steel-reinforced concrete. Built in Paris, France.

1936



HOOVER DAM
The number of large-scale concrete projects increased including the Grand Coulee Dam.

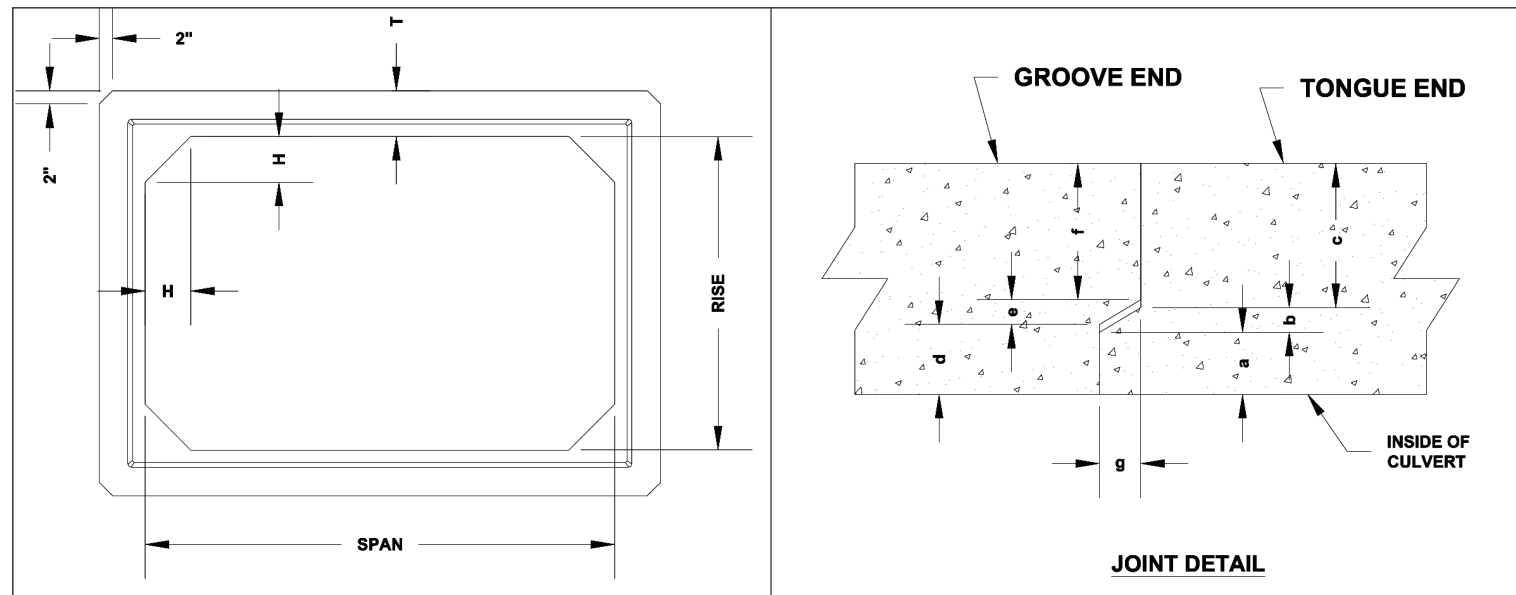
Applicable Specifications:

ASTM C1433 - Precast Reinforced Concrete Monolithic Box Sections for Culverts, Storm Drains, and Sewers

ASTM C1577 - Precast Reinforced Concrete Monolithic Box Sections for Culverts, Storm Drains, and Sewers according to AASHTO LRFO.

SMALL REINFORCED CONCRETE BOX CULVERT | RCBC

SPAN FEET	RISE FEET	WALL THICKNESS INCH	HAUNCH INCH	LENGTH (L) FEET	WEIGHT LBS.
3	3	4	7	8	7,400
4	3	5	7	8	9,400
4	4	5	7	8	10,400
5	3	6	7	8	11,900
5	4	6	7	8	13,000
5	5	6	7	8	14,150
6	3	7	7	8	14,000
6	4	7	7	8	15,300
6	5	7	7	8	16,600
6	6	7	7	8	17,900
7	3	8	8	8	19,158
7	4	8	8	8	20,760
7	5	8	8	8	22,362
7	6	8	8	8	23,964
7	7	8	8	8	25,566
8	3	8	8	8	20,760
8	4	8	8	8	22,362
8	5	8	8	8	23,964
8	6	8	8	8	25,566
8	7	8	8	8	27,168
8	8	8	8	8	28,770



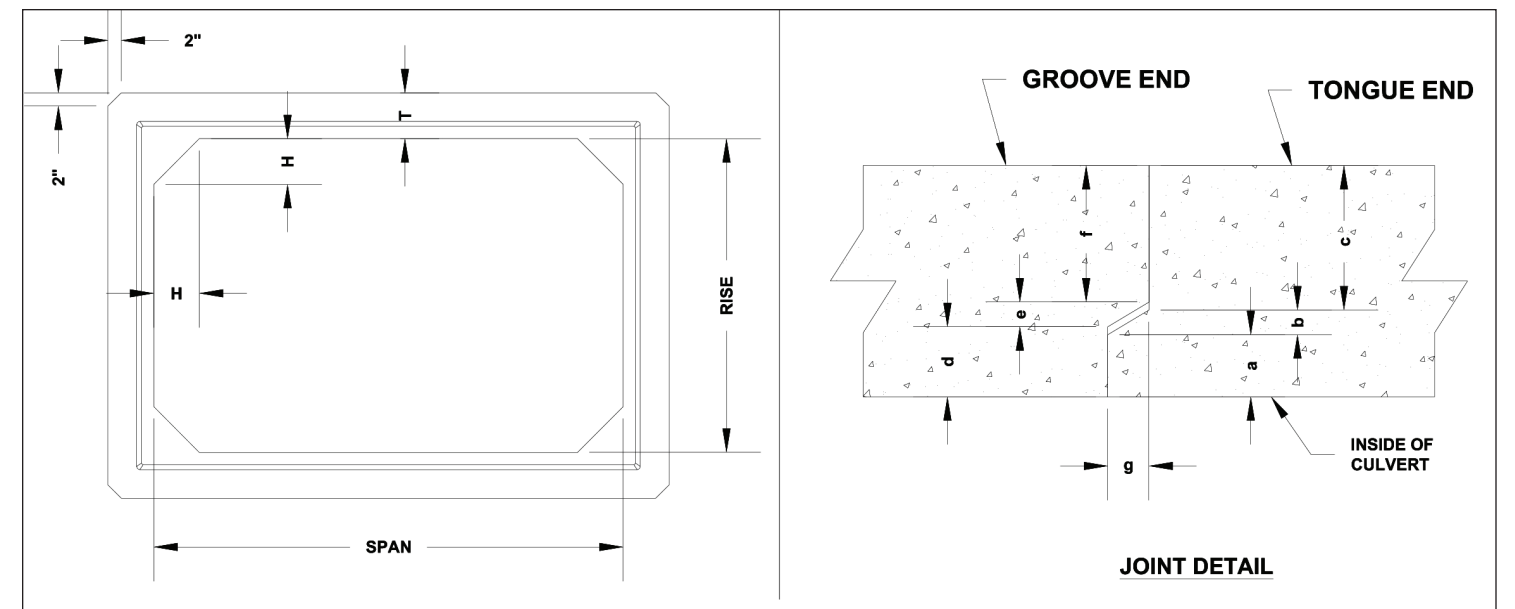
NOTES:

1. All dimensions subject to allowable specification tolerances and parameters.
2. All products meet or exceed applicable AASHTO, ASTM, and standard local requirements.
3. Steel welded wire mesh conforms to ASTM A1064.
4. Culverts manufactured in accordance with ASTM C789, C1433, C1577, and AASHTO M259.
5. Gasket materials shall conform to ASTM C990.

PREMIER
CONCRETE PRODUCTS

LARGE REINFORCED CONCRETE BOX CULVERT | RCBC

SPAN FEET	RISE FEET	WALL THICKNESS INCH	HAUNCH INCH	LENGTH (L) FEET	WEIGHT LBS.
10	4	10	12	8	26,169
10	5	10	12	8	28,095
10	6	10	12	8	37,717
10	7	10	12	8	39,720
10	8	10	12	8	41,722
10	10	10	12	8	45,728
12	4	12	12	8	45,599
12	5	12	12	8	48,002
12	6	12	12	8	50,405
12	7	12	12	8	52,809
12	8	12	12	8	55,212
12	10	12	12	8	60,019
12	12	12	12	8	64,826
14	5	14	12	8	62,160
14	6	14	12	8	64,964
14	7	14	12	8	67,768
14	8	14	12	8	70,572
14	10	14	12	8	76,181
14	12	14	12	8	81,789
14	14	14	12	8	87,397



NOTES:

1. All dimensions subject to allowable specification tolerances and parameters.
2. All products meet or exceed applicable AASHTO, ASTM, and standard local requirements.
3. Steel welded wire mesh conforms to ASTM A1064.
4. Culverts manufactured in accordance with ASTM C789, C1433, C1577, and AASHTO M259.
5. Gasket materials shall conform to ASTM C990.

PREMIER
CONCRETE PRODUCTS



Servicing the Entire Gulf Coast



PREMIER
CONCRETE PRODUCTS
WWW.PREMIER-CONCRETE.COM
800 575 7293

38200 LA Hwy. 16 Denham Springs, LA 70706



Customer should verify with the product manufacturer that customer has the most current **Premier Concrete**® specifications for the product ordered or purchased. The **Premier Concrete**® system can be used in the application described in our literature and on our website, provided proper installation and engineering principles are followed. Professional engineering should be consulted before installation of **Premier Concrete**® units to assure appropriate design and use. ALL EXPRESSED OR IMPLIED WARRANTIES, INCLUDING THOSE OF MERCHANTABILITY AND FITNESS FOR A PARTICULAR PURPOSE ARE DISCLAIMED.